



**Warsaw University of Life Sciences**



**IFMA 19  
WARSAW, POLAND  
21st-26th of July, 2013**

**Edward Majewski**

**Bogdan Klepacki**

**Adam Wąs**



**Warsaw University of Life Sciences**



**IFMA 19  
WARSAW, POLAND  
21st-26th of July, 2013**

# The Lesson

**WE CAN NOT GO ON DOING THE  
SAME OLD THINGS**

# The Message

**Instead we must be:**

**BETTER**

**MORE INNOVATIVE**

**RESPONSIVE TO THE CHALLENGES**

**and**

**NETWORKING**

# POLAND in brief



**Population:**

**38 millions**

**Area:**

**312 685 km<sup>2</sup>**

**Member of the EU**

**the 6<sup>th</sup> largest country of the EU**



# Poland and the Neighbors

## Neighbors:

Belarus  
Czech Republic  
Germany  
Lithuania  
Russia  
Slovakia  
Ukraine

## Capital city:

Warsaw (2.0 mln)





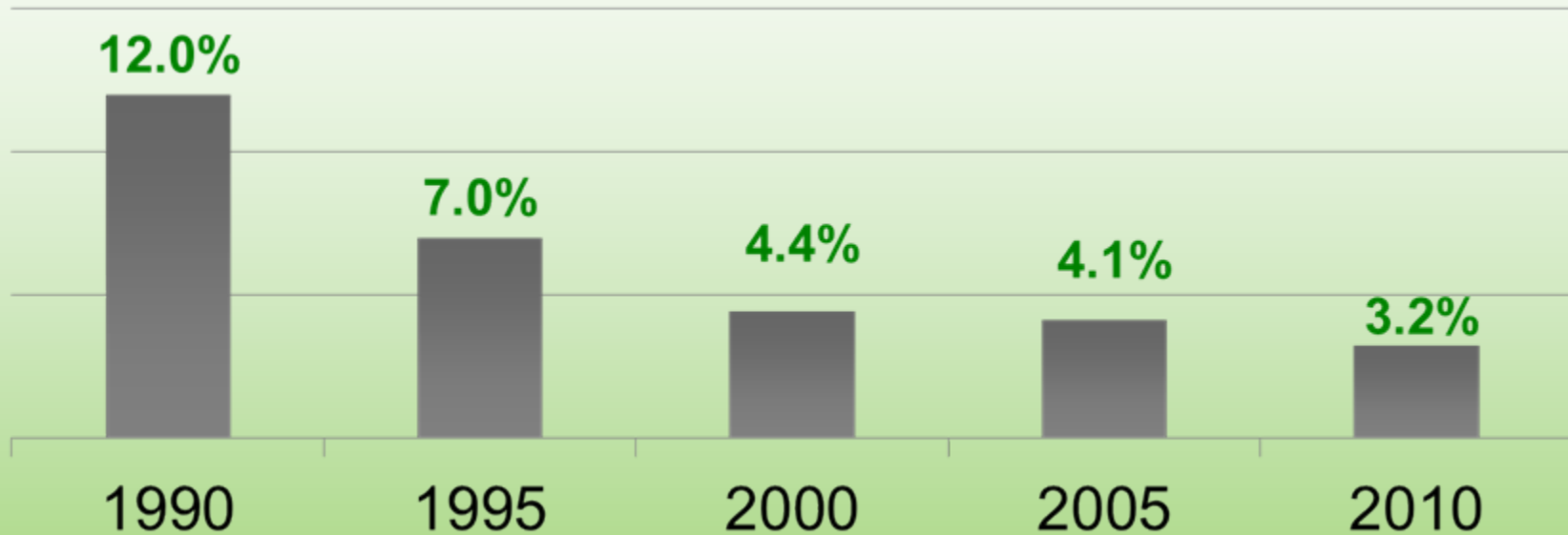
# Polish Agriculture





# Agriculture as the sector of the Polish economy

**Diminishing share in the GDP**



**but the sector is still an important part of the economy:**

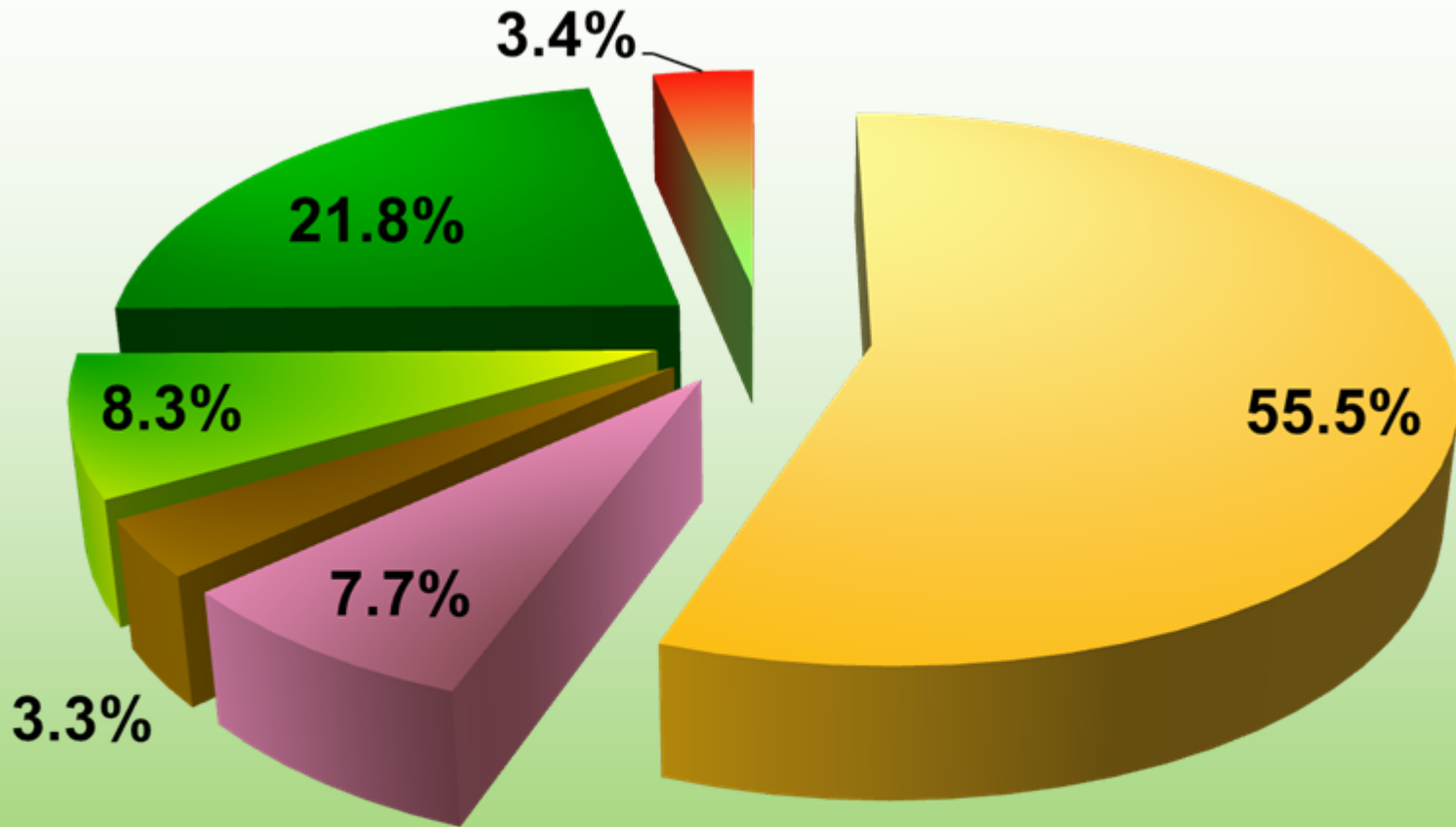
- as a supplier of food and industrial products
- provider of jobs for 14% of working population
- contributor to the growing exports of the Food Industry

# Polish farms

**1,8 mln units**  
**average size 8,4 ha**

Size cluster	Share in number [%]	Share in land use [%]	Average size [ha]
Below 5 ha	55%	19%	2.9
5 – 10 ha	25%	23%	7.5
10 – 500 ha	19%	42%	18
above 500 ha	1%	16%	1 500

# What do our farmers grow?



Cereals

Industrial

Potatoes

Fodder on arable

Permanent grassland

Fruits & Veg

# What our farmers keep in barns?

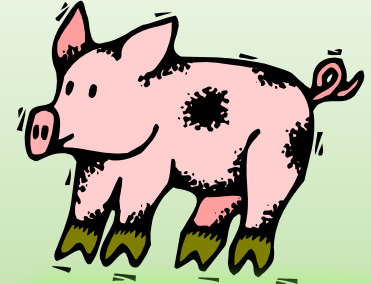
**Dairy cows**

**2,5 mln**



**Pigs**

**21 mln**



**Poultry**

**130 mln**



**Sheeps**

**320 th.**

**Horses**

**325 th.**



# WARSAW - The capital of Poland

Founded in 1294

**Today:**

the largest in Poland political,  
business and cultural centre  
2 million inhabitants





# SGGW

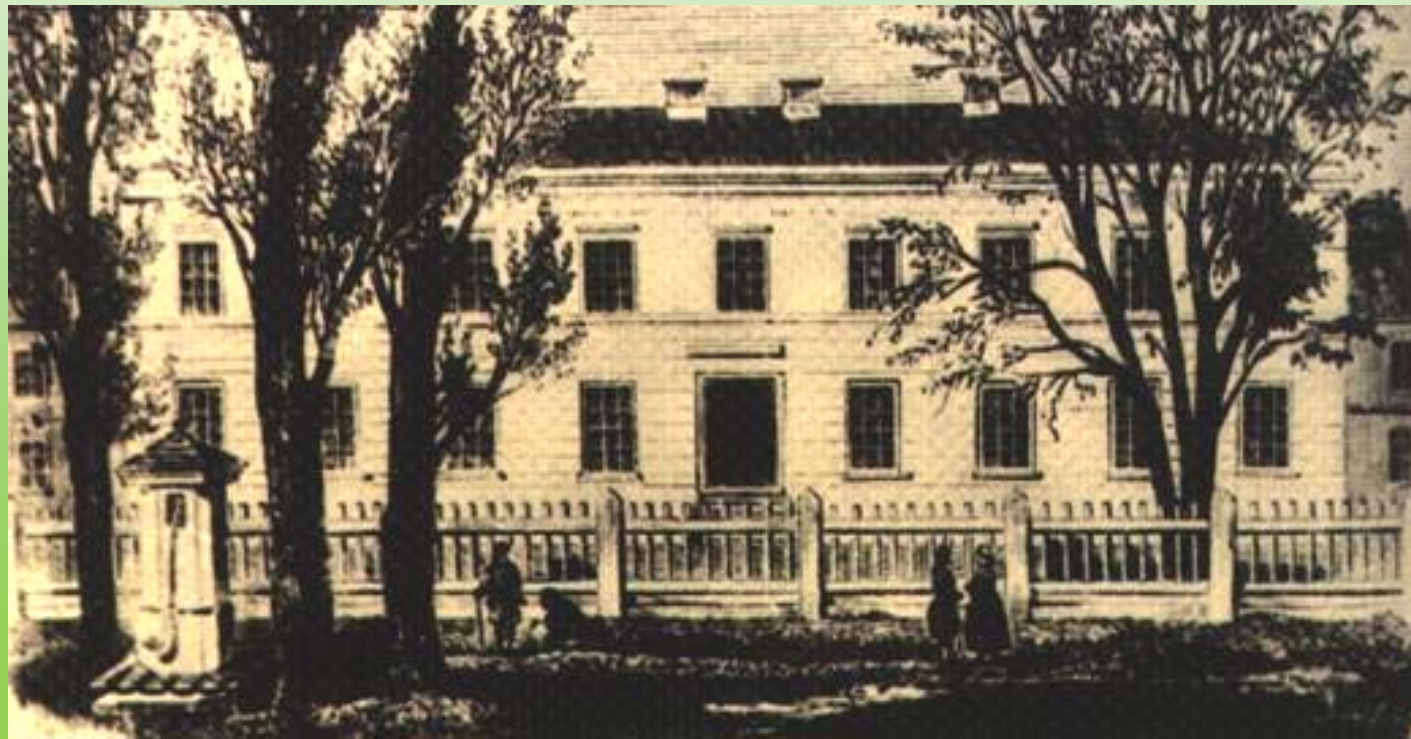
## Warsaw University of Life Sciences

The oldest agricultural higher education institution in Poland

**1816** - establishment of the Institute of Agronomy

**1919** - nationalized and named SGGW

„Main School of Rural Economy”



Institute of  
Agronomy  
in Marymont



# SGGW- Campus today



Historical part of campus with Rectorate situated in XVIII<sup>th</sup> century Palace





# **SGGW – the new Campus today**

**18 Faculties**

**2700 staff**

**27000 students**



[www.sggw.pl](http://www.sggw.pl)

# Field trips



- Farms
- Food processing plants
- Extension service centers
- Research institutes
- Apple production region
- Wholesale market

# Accompanying program

- **Warsaw palaces and parks**
- **Warsaw musea**  
The 1944 uprising, Center of Science „Copernikus”, ...
- **Visit to „Żelazowa Wola”** the birthplace of Chopin
- **Art gallery**
- **Shopping mall**
- **...**



# Pre-/Post Congress Tours

## „North-Eastern Poland”



# Pre-/Post Congress Tours

## „Southern Poland”





# What can you take away?



**NOT just the taste of good food...**

# What can you take away?



**NOT only the photographs of happy memories...**

# What can you take away?

**BUT MAINLY:**

- **New contacts**
- **New ideas**
- **Increased confidence in what You/We are doing**



Warsaw University of Life Sciences



**WELCOME TO**  
**IFMA 19**  
**WARSAW, POLAND**  
**21st-26th of July, 2013**

[www.sggw.pl](http://www.sggw.pl)