

AGRICULTURE IN THE REPUBLIC OF MOLDOVA

Ana Machidon

Warsaw University of Life Sciences—SGGW

Country – 33,846 km²

Population – 3,559,500

In urban areas – 41%

In rural areas – 59%

Agricultural land area – 2243540,02 ha

Arable land – 73%

Permanent grassland – 14%

Employed in agriculture – 323020

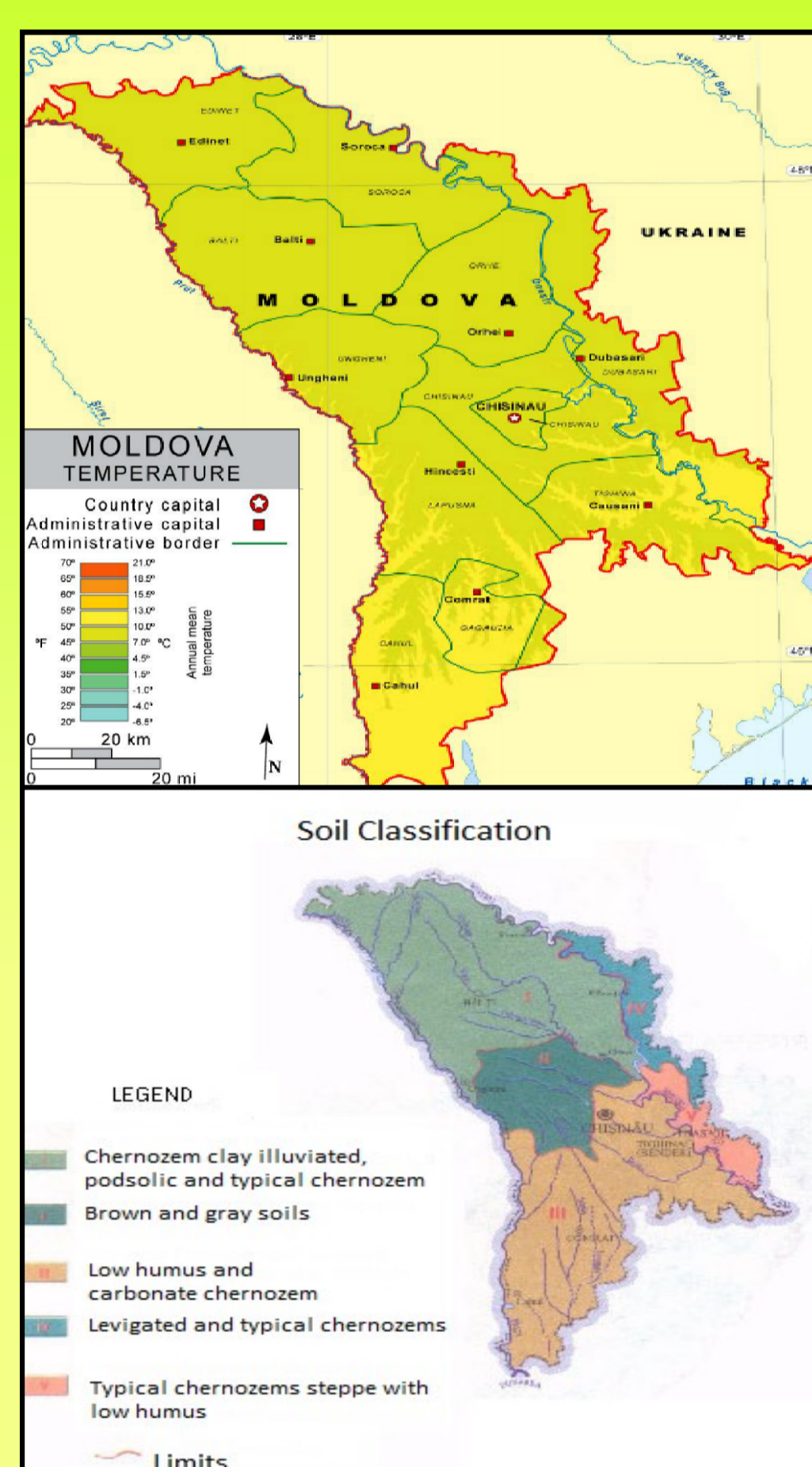
Share of agriculture in GDP – 15%



NATURAL CONDITIONS

Moldova's climate is moderately continental: the summers are warm and long, with temperatures averaging about 20 °C (68 °F), and the winters are relatively mild and dry, with January temperatures averaging -4 °C (25 °F). Annual rainfall, which ranges from around 600 mm (24 in) in the north to 400 mm (16 in) in the south, can vary greatly; long dry spells are not unusual.

About 75 percent of Moldova is covered by a soil type called black earth or chernozem. In the northern hills, more clay textured soils are found; in the south, red-earth soil is predominant. The soil becomes less fertile toward the south but can still support grape and sunflower production. The hills have woodland soils, while a small portion in southern Moldova is in the steppe zone, although most steppe areas today are cultivated. The lower reaches of the Prut and Dniester rivers and the southern river valleys are saline marshes.



Source: <http://en.wikipedia.org/wiki/Moldova#Climate>

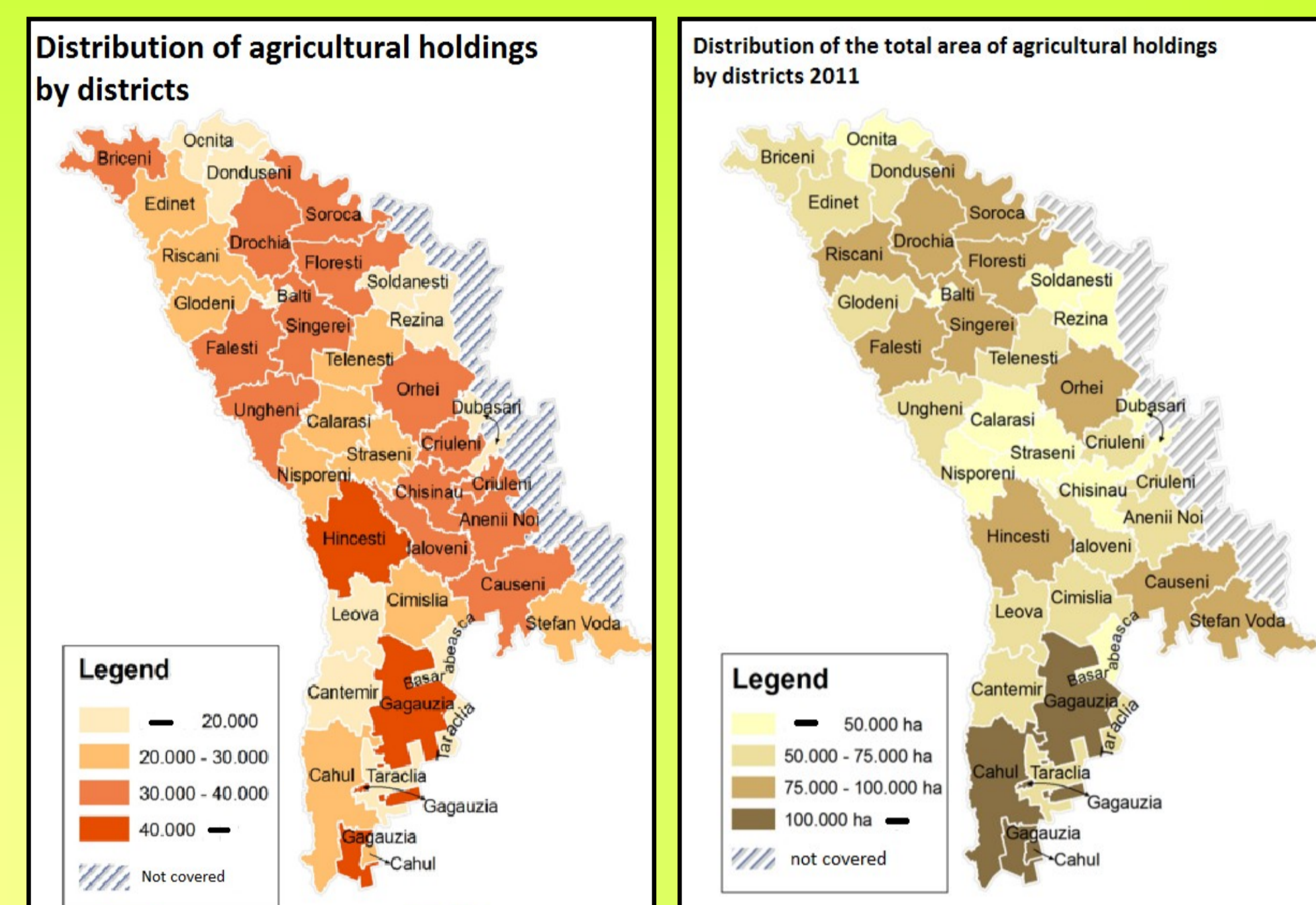
FARM STRUCTURE

The optimum farm size is difficult to define because opinions about the farmers' objective function differ and because the same determinants can affect farm size in different ways across different farms or countries.

In the absence of a universal optimum, average farm sizes can be meaningfully compared only for countries with similar natural conditions.

The average farm size is 2.49 ha.

The average size of small agricultural unit is 0.06 ha.

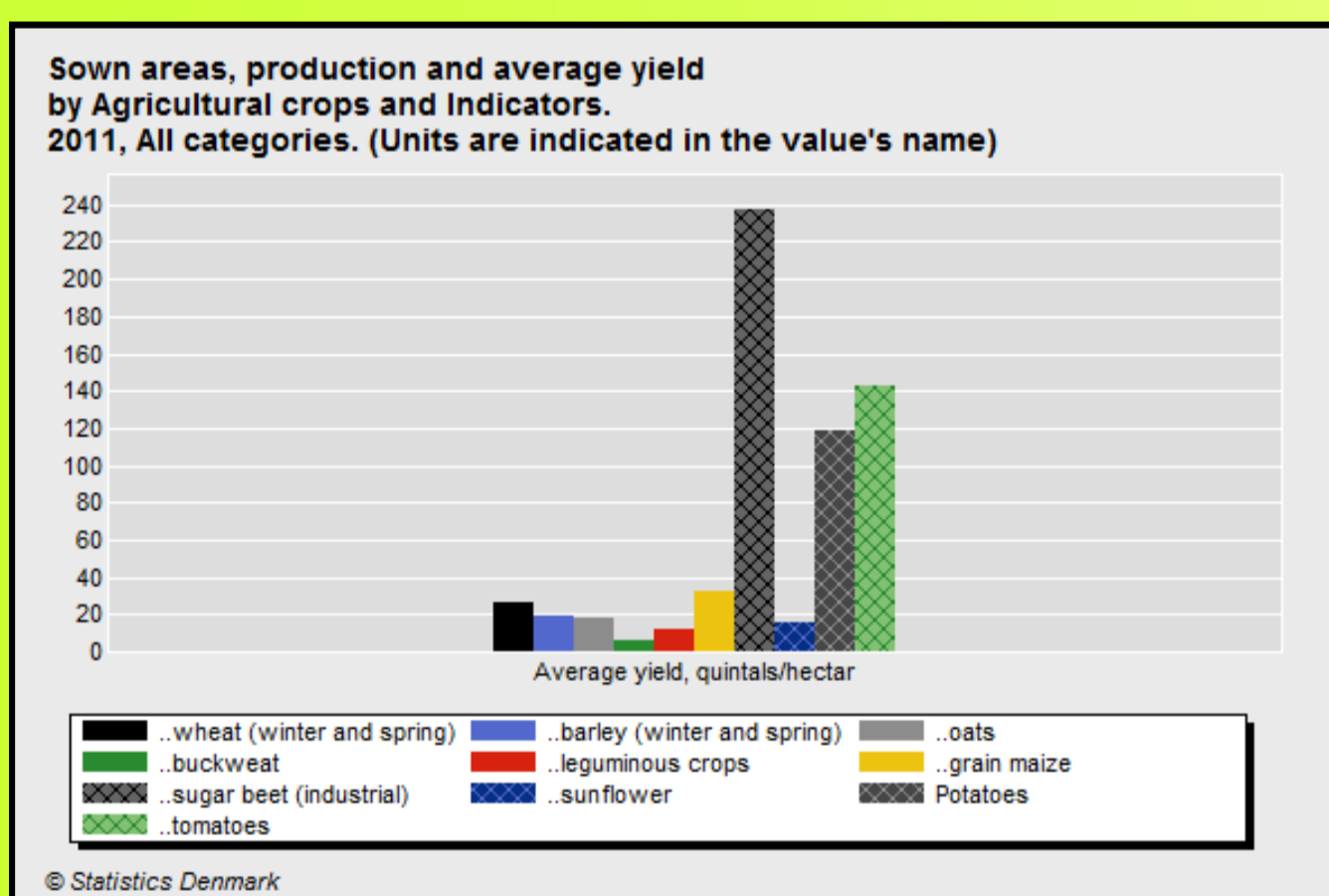


Source: National Bureau of Statistics, www.statistica.md

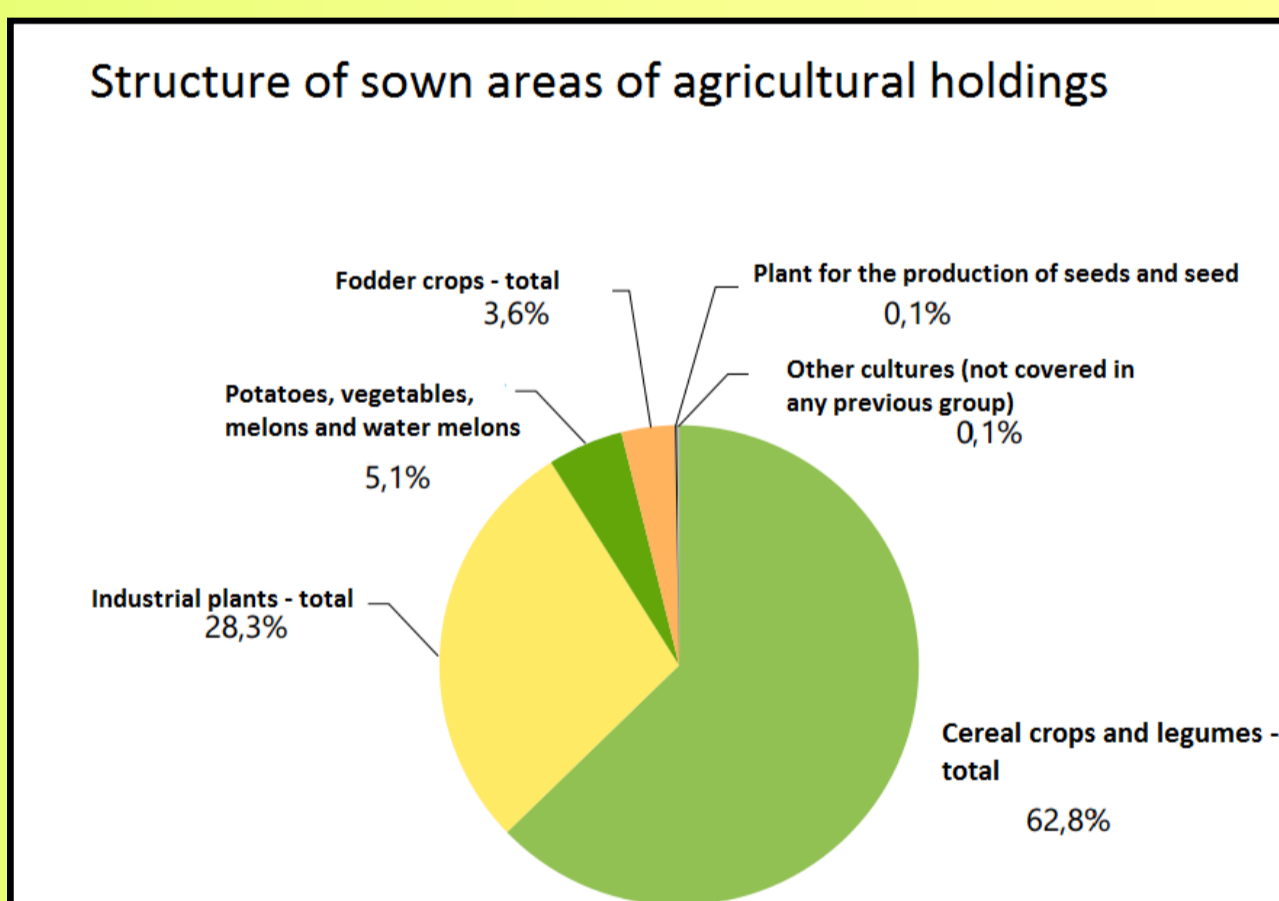
CROP PRODUCTION

	All categories			
	2008	2009	2010	2011
Cereals and leguminous crops - total	3,170	2,176	2,421	2,498
..wheat (winter and spring)	1,286	737	744	795
..barley (winter and spring)	353	261	208	194
..oats	4	1	3	3

Source: National Bureau of Statistics, www.statistica.md



Source: National Bureau of Statistics, www.statistica.md

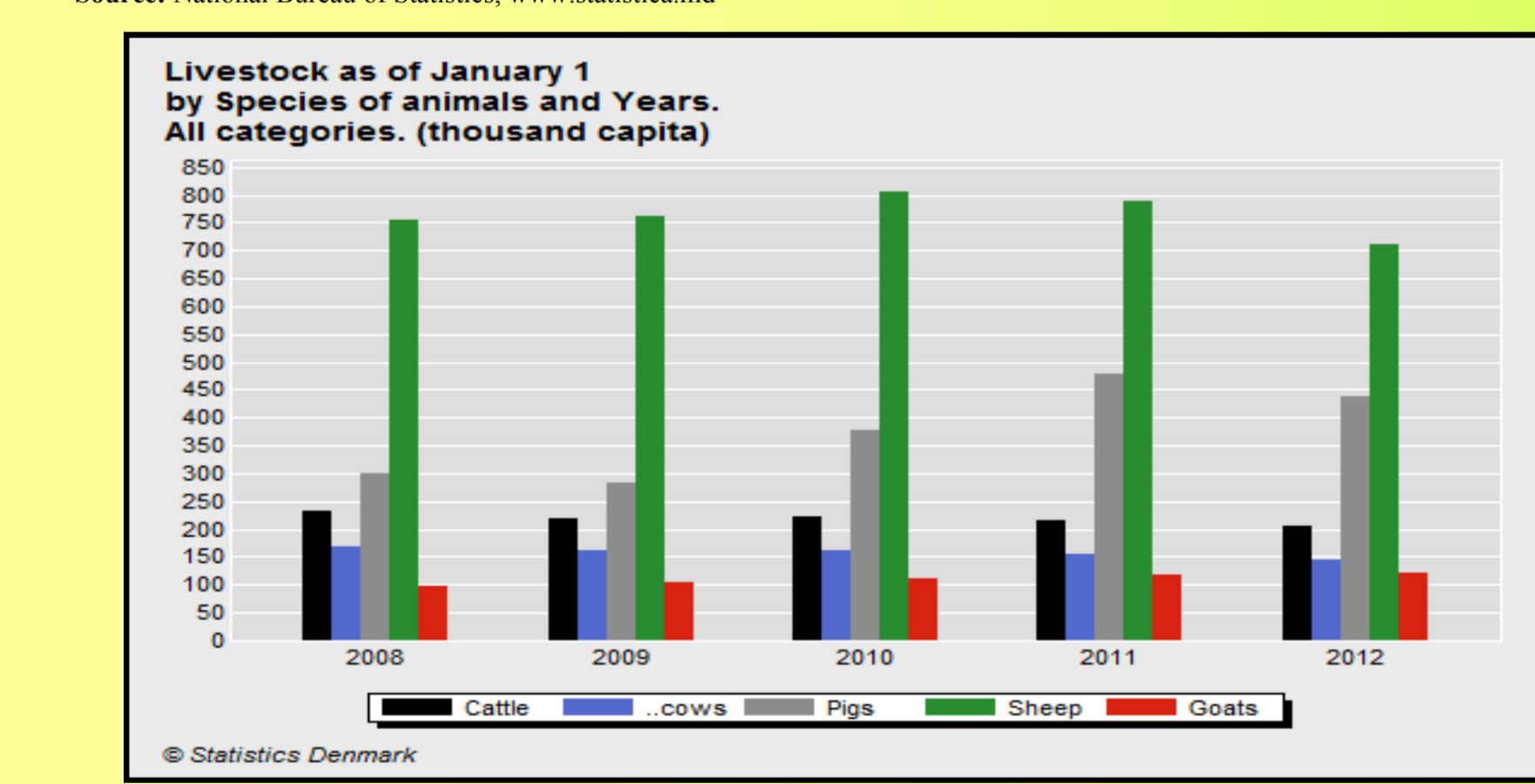


Source: National Bureau of Statistics, www.statistica.md

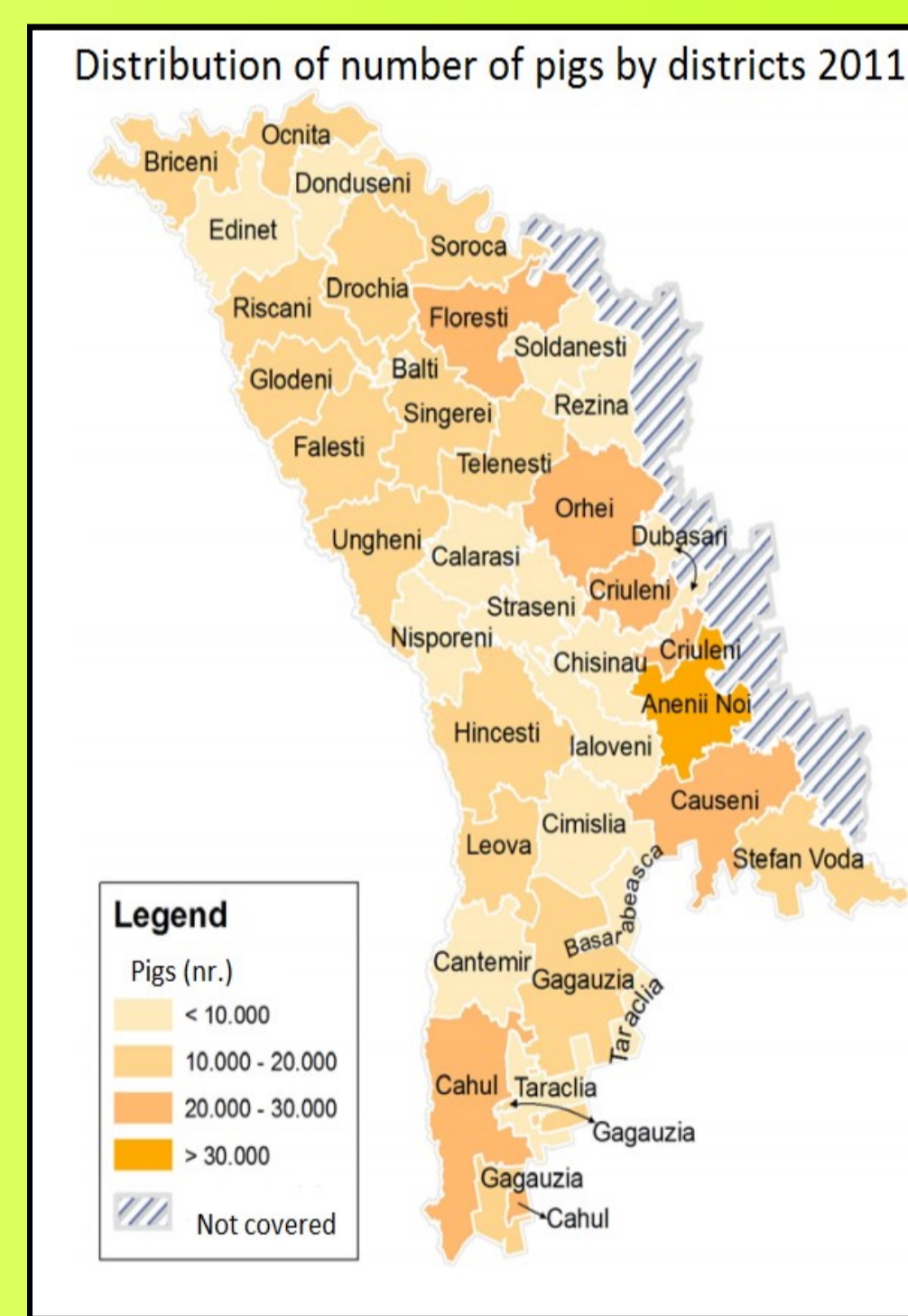
ANIMAL PRODUCTION

	All categories			
	2008	2009	2010	2011
Sale of cattle and poultry for slaughter (in live weight)	108.2	124.5	150.0	159.0
..cattle	17.6	18.4	16.9	16.1
..pigs	44.7	53.8	72.5	81.4
..sheep and goats	4.8	4.8	4.7	4.7
Milk	510.5	538.9	591.2	525.8

Source: National Bureau of Statistics, www.statistica.md



Source: National Bureau of Statistics, www.statistica.md



INTERNATIONAL TRADE

In 2011, Moldova's foreign trade balance with food products, animals, beverages and tobacco was positive, with an excess worth 14.2 mil. USD. Fruits and vegetables were the most valuable category of exported food products in 2011, and the destination of these exports, with small exceptions, was rather Commonwealth of Independent States markets (Russian Federation, Ukraine and Belarus) and Romania.

	Export	Import	Balance	Top in export	Top in import
	mil. USD	mil. USD	mil. USD		
Live animals	8.2	5.7	2.5	9	12
Meat and meat products	21.6	33.5	-11.9	5	8
Dairy and eggs	10.8	33.3	-22.5	8	9
Fish, crustaceans and molluscs		46.8	-46.8	12	7
Cereals and cereal derived products	86.1	77.3	8.8	3	3
Fruits and vegetables	280.7	132	148.7	1	1
Sugar, sugar and honey derived products	15.8	23.1	-7.3	7	10
Coffee, tea, cacao, spices and their substitutes	3	55.5	-52.5	10	5
Livestock feed	17.5	19.1	-1.6	6	11
Diverse food products and derivatives	2.6	74.6	-72	11	4
Beverages	180.9	47.9	133	2	6
Tobacco	28.7	92.9	-64.2	4	2
TOTAL	655.9	641.7	+14.2	x	x

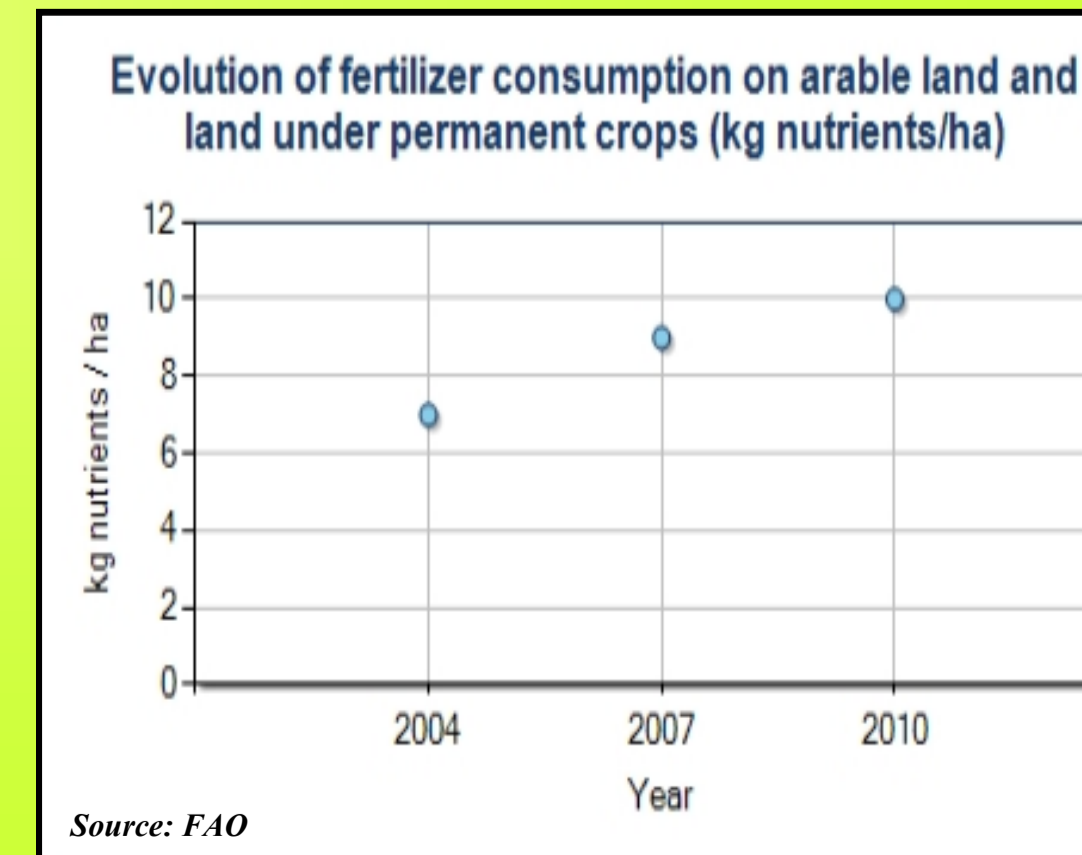
Source: <http://www.cuba.ifma.info/links/docs/organic-sect-mf-perspectives.pdf>

ACCESS TO NUTRIENTS

The bulk of national market of fertilizers is made of imports. 338 companies were licensed to import and trade fertilizers as of November 2012. Regionally, Moldovan agriculture incorporated the least of fertilizers, way less than some European countries such as Germany, Italy. The situation is explained by the lack of finance to purchase such operating inputs. According to FAO data, fertilizer consumption on arable land and land under permanent crops in 2010 was 10 kg of nutrients/ha. According to the agricultural land, the nutrients used have an increased number in comparison to the year 2002 (table).

	Nitrogen nutrients		Phosphate nutrients		Potash nutrients		Agric. ure land Th. ha			
	Mio. T	%	Mio. T	%	Mio. T	%				
Ukraine	443492	748365	68.7	33129	197909	497.4	42436	167322	294.3	41276
Russian Federation	654204	1192680	82.3	313151	436980	39.5	705909	263210	-62.7	215561
Romania	239071	305757	27.9	72996	123331	69.0	14056	51500	266.4	13523
Republic of Moldova	14700	16400	11.6	200	2400	112	100	1300	113	2472
Poland	831700	1294223	55.6	302600	388382	28.3	377400	462157	22.5	16119
Lithuania	13653	106716	681.6	67412	54481	-19.2	99479	42605	-57.2	2689
Latvia	36047	58643	62.7	4546	16150	255.3	8636	16288	88.6	1833
Italy	845033	499505	-41.0	316143	100254	-43.0	256941	185510	-27.8	13908
Germany	1787833	1786485	-0.1	327387	286348	-12.5	478672	432743	-49.6	16886
France	2203200	2050015	-7.0	713300	294500	-58.2	965100	431730	-55.3	29266
Estonia	16700	28628	71.4	4015	6117	52.4	6292	9366	48.9	931
Czech Republic	191778	255423	33.2	41409	46116	11.4	30555	57556	82.5	4239
Austria	170974	86153	-49.6	77513	23614	-69.5	75636	38188	-49.5	8927

Source: FAO



Contact to Authors:

Ana Machidon— machidon_ana@yahoo.com