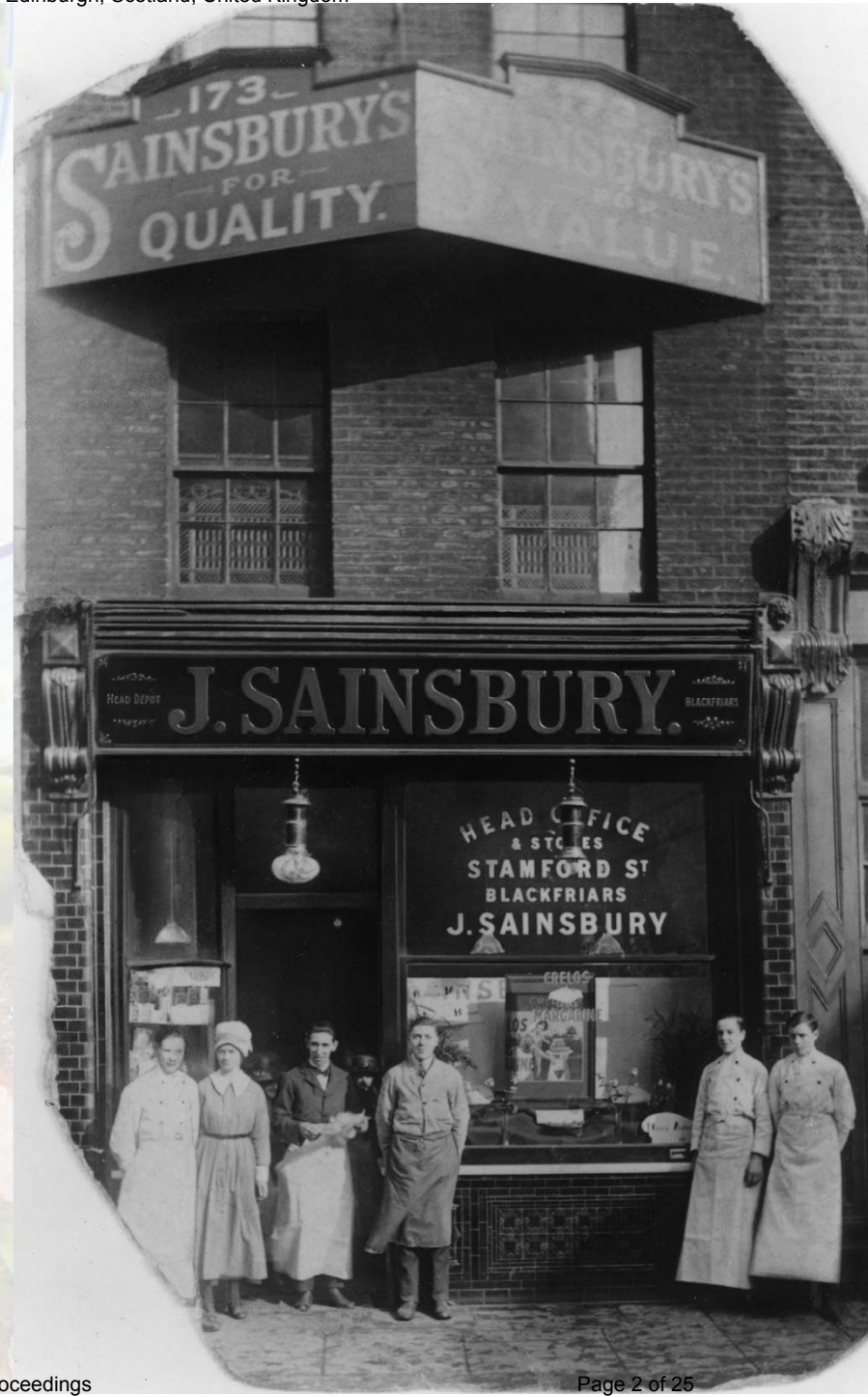


Globalisation Effects on Farming Systems Around the World

Beth Hart
Sainsbury's Head of Agriculture & Sourcing



1869: John, James and Mary Sainsbury open their first store in Drury Lane, London



Our Value Chain

FROM FIELD...



TO FORK...

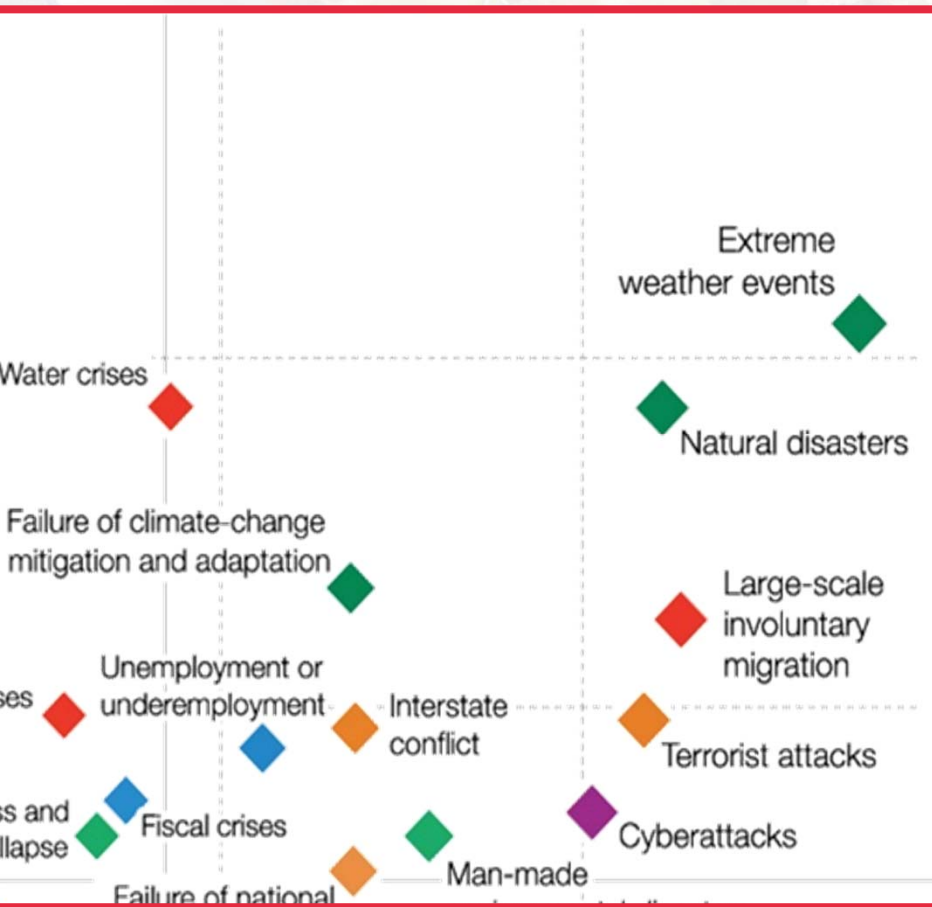
Sainsbury
Annual Sustainability



The Challenges

World Economic Forum Global Risks Perception Survey 2016

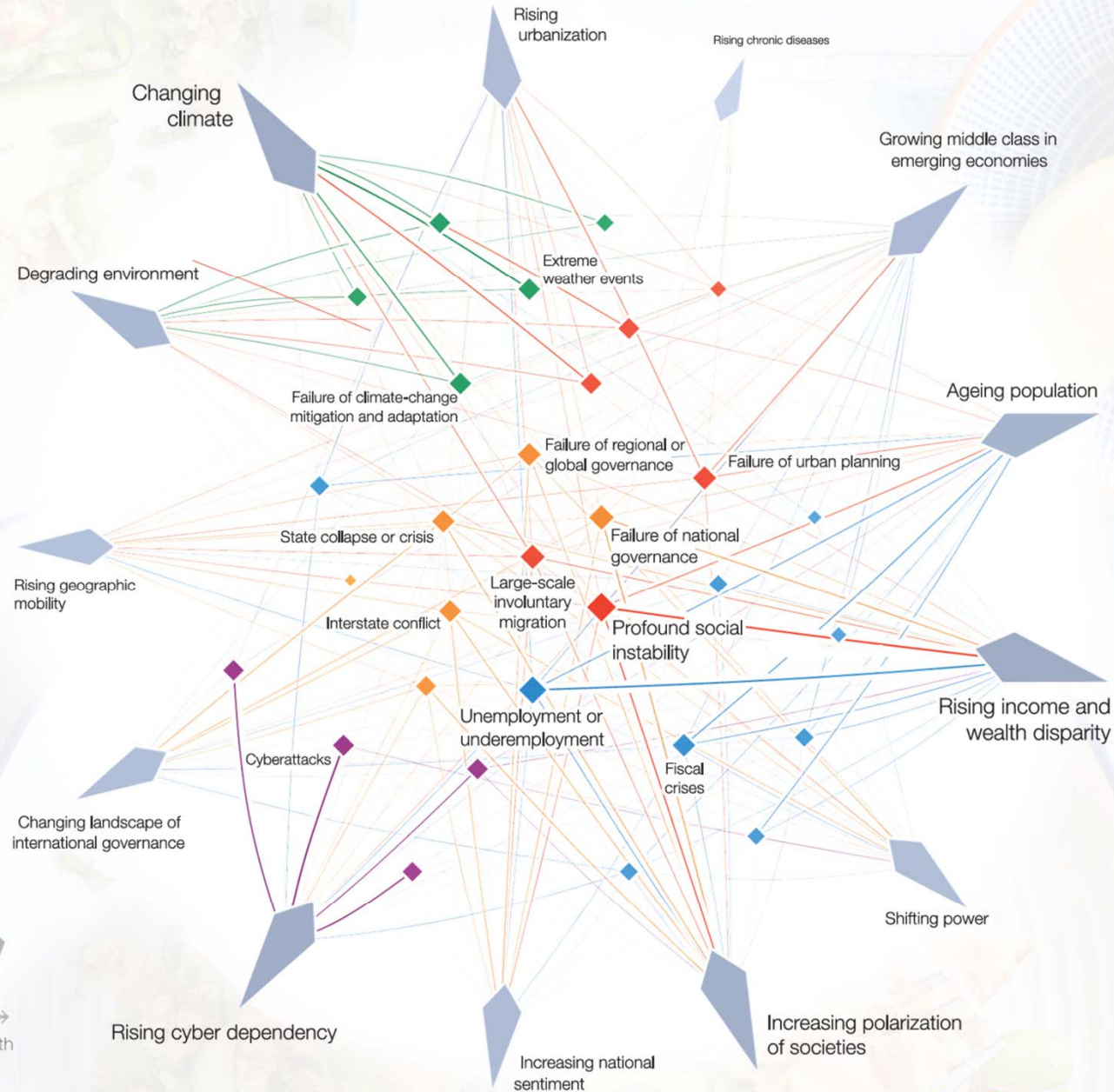
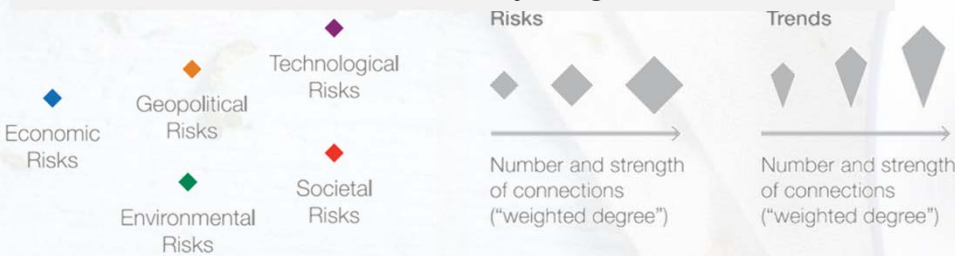
The Global Risks Landscape



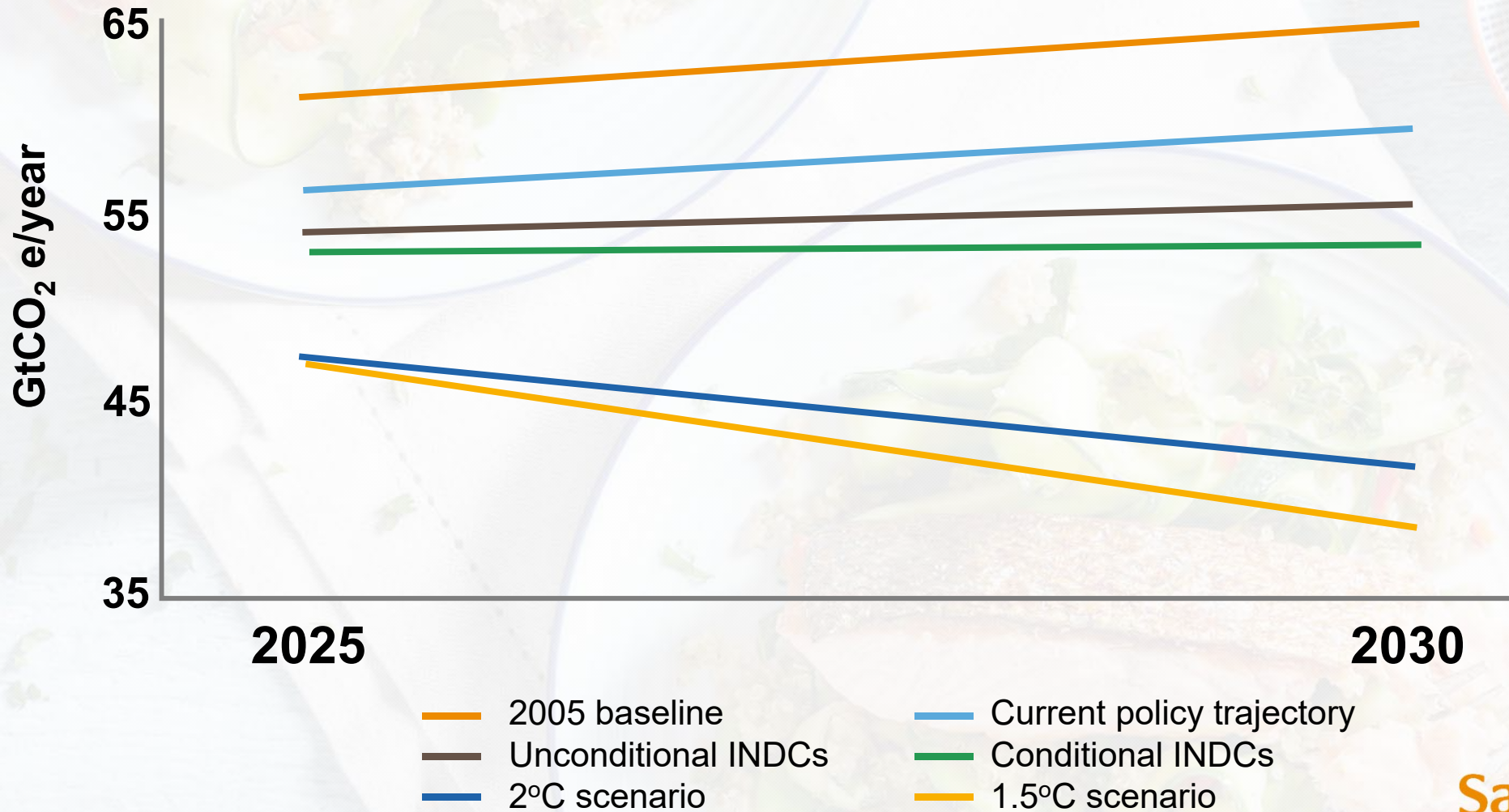
The Risks-Trends Interconnections Map

Most Important Risks' Interconnections

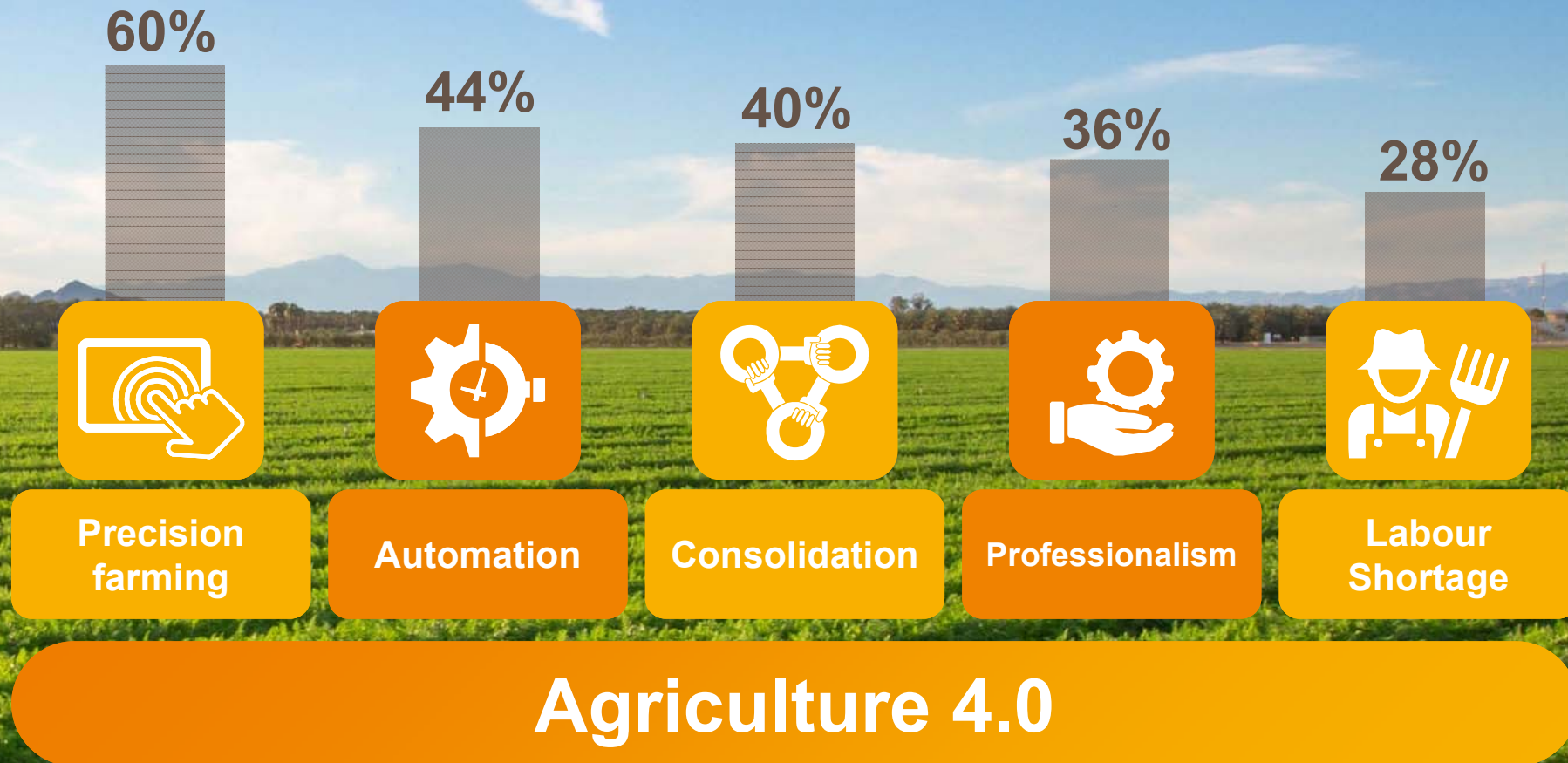
- 1 Unemployment and underemployment
Profound social instability
- 2 Large-scale involuntary migration
State collapse or crisis
- 3 Failure of climate-change mitigation and adaption
Water crises
- 4 Failure of national governance
Profound social instability
- 5 Interstate conflict with regional consequences
Large-scale involuntary migration



Projected Global Greenhouse Gas Emissions, 2025-2030



What do our producers think are the most influential trends affecting farming practices and structures through to 2030?





The global frameworks for action



UN Sustainable Development Goals

A common language and currency



TRANSFORMING
OUR WORLD:
THE 2030 AGENDA
FOR SUSTAINABLE
DEVELOPMENT

1 NO
POVERTY



2 ZERO
HUNGER



3 GOOD HEALTH
AND WELL-BEING



4 QUALITY
EDUCATION



5 GENDER
EQUALITY



6 CLEAN WATER
AND SANITATION



7 AFFORDABLE AND
CLEAN ENERGY



8 DECENT WORK AND
ECONOMIC GROWTH



9 INDUSTRY, INNOVATION
AND INFRASTRUCTURE



10 REDUCED
INEQUALITIES



11 SUSTAINABLE CITIES
AND COMMUNITIES



12 RESPONSIBLE
CONSUMPTION
AND PRODUCTION



13 CLIMATE
ACTION



14 LIFE
BELOW WATER



15 LIFE
ON LAND



16 PEACE, JUSTICE
AND STRONG
INSTITUTIONS



17 PARTNERSHIPS
FOR THE GOALS



8 of the 17 UN SDGs relate
to agriculture and food

Global GHG Emissions Paris COP21



**United Nations
Framework
Convention on Climate
Change**

145 Parties have ratified of 197 Parties to the Convention

On 5 October 2016, the threshold for entry into force of the Paris Agreement was achieved. The Paris Agreement entered into force on 4 November 2016. The first session of the Conference of the Parties serving as the Meeting of the Parties to the Paris Agreement (CMA 1) took place in Marrakech, Morocco from 15-18 November 2016.
[More information](#)



Long-term
temperature
goal and Global
peaking

Mitigation and
Adaptation

Sinks and
reservoirs

Voluntary
cooperation/Mark
et- and non-
market-based
approaches

Loss and
damage

Finance,
technology and
capacity-
building support

Climate change
education, training,
public awareness,
public participation
and public access to
information

Transparency

Global
Stocktake

Our values

A great place to work

Living healthier lives

Sainsbury's Values

Making a positive difference to our community

Sourcing with integrity

Respect for our environment



Our Customer is changing

Health & Wellbeing
Health is the new wealth

Lifestyle Change
A new way of living



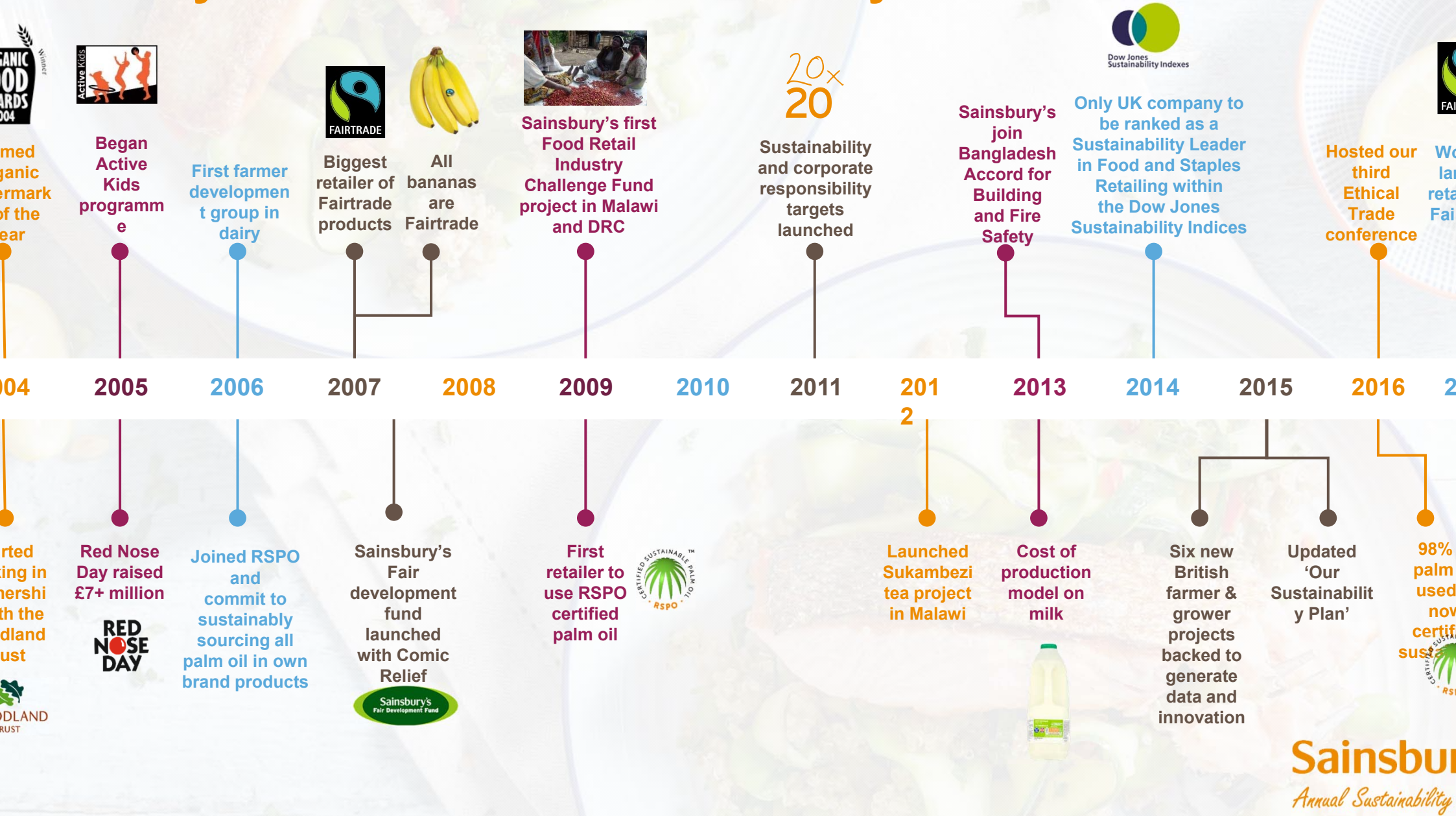
Technology

Personalisation – My Way

Ethics & Sustainability

Sainsbury's
Annual Sustainability

Sainsbury's Brand milestones and key achievements



We source from more than 60 countries



Cotton



Strawberries



Milk



Timber



Eggs



Salmon



Citrus Fruit



Cork



Wheat



Cod



Chicken



Leather



Apples



Peat



Pork



Coffee



Rapeseed



Cocoa



Palm Oil



Blueberries



Biofuels



Prawns



Soya



Tomatoes



Tuna



Grapes



Haddock



Sunflower Oil



Potatoes



Bee



Sugar



Tea



Carrots



Paper



Lamb

We have a long history of supporting and working with our farmers in the UK

R&D
innovation



**Skills and capacity
building**



Data Driven Insights

- 6 years of Data
- Over 4,000 farms
- More than 1 million animals
- More than 20 million data points

**Total project
value £15.2m**

73 projects

**187 project
partners**



Buying better for less

Driving quality and Freshness

Solving common challenges

New collaborations

We are committed to investing in the sustainability of our:



Suppliers



Farmers

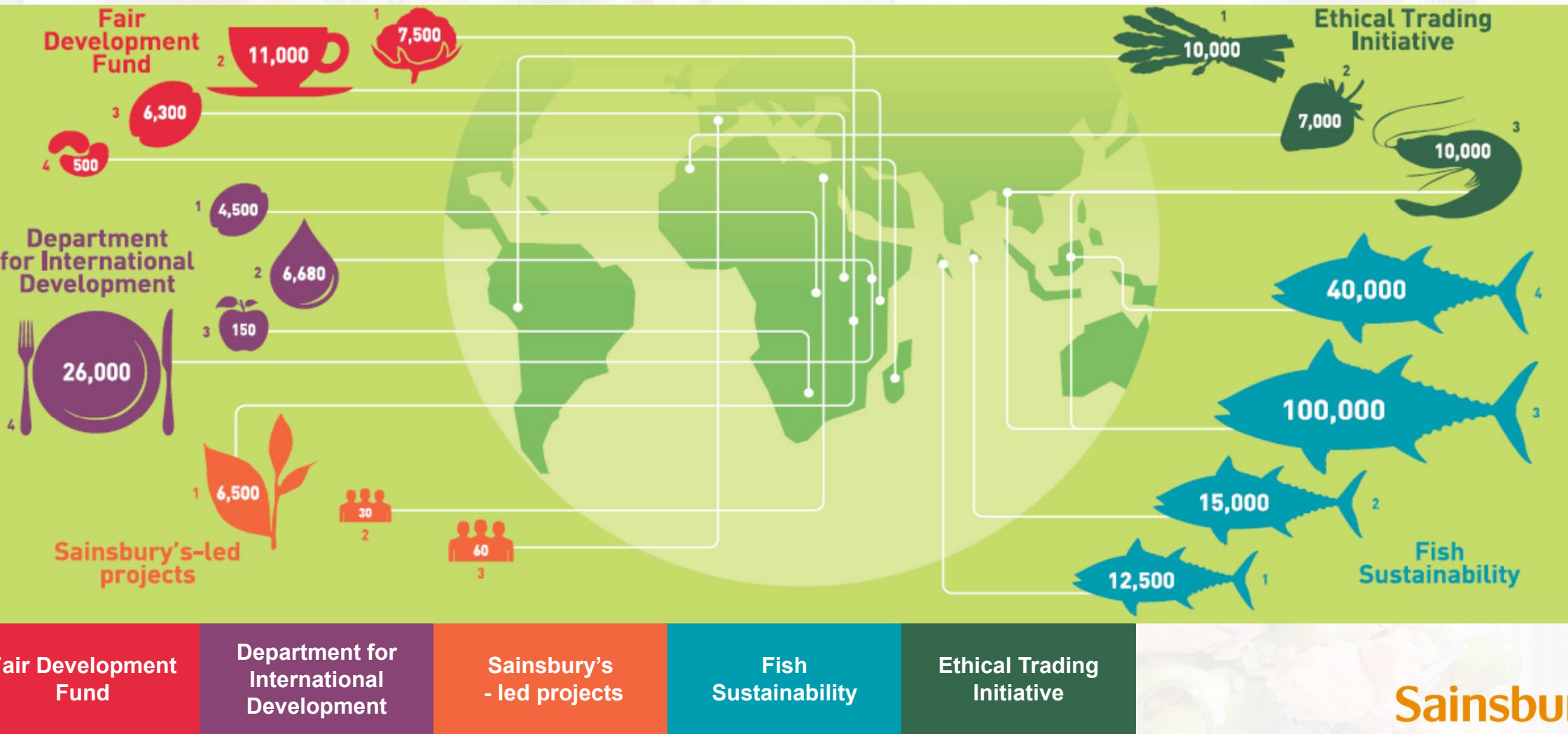


Growers



Workers

We have a long history of supporting and working with our farmers around the world



Fair Development Fund

Department for International Development

Sainsbury's - led projects

Fish Sustainability

Ethical Trading Initiative

Sainsbury
Annual Sustainability

We work with a range of trusted partners

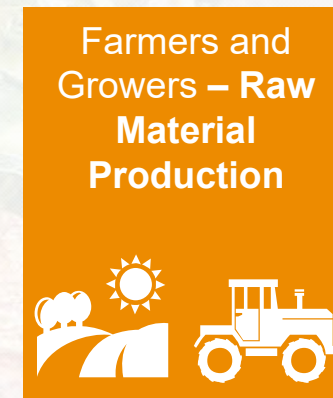


We are making a 'step change' to our approach to "Sourcing with integrity"

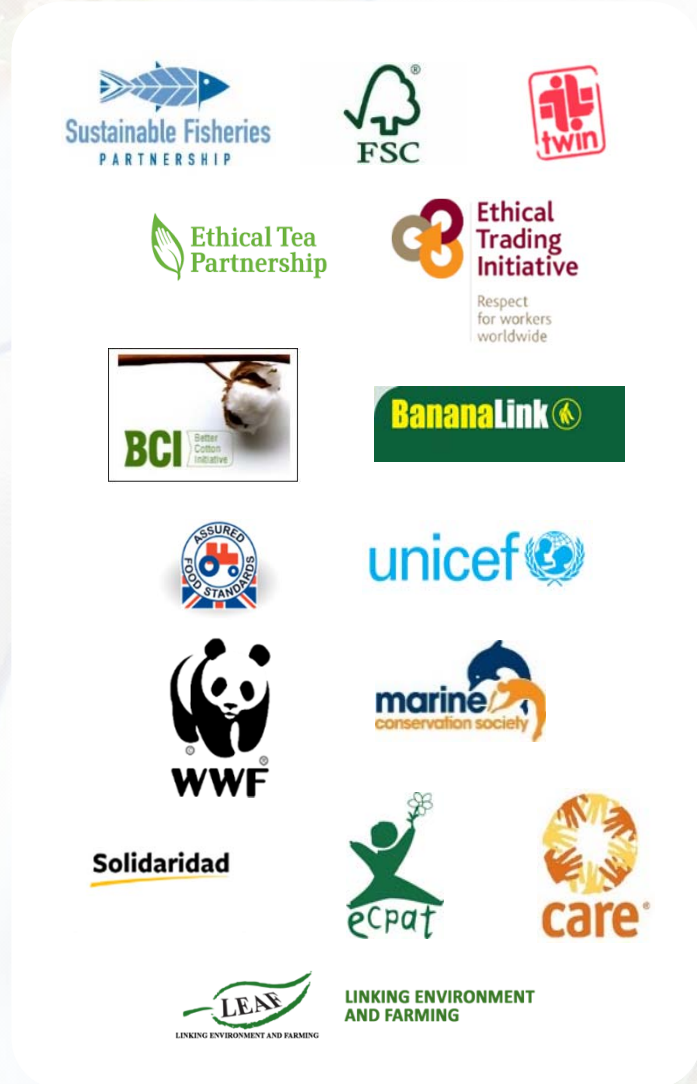


Sainsbury's Sustainability Standards

Our Sustainability Standards support our suppliers, farmers and producers to engage in a continuous improvement process across economic, social and environmental challenges



Co-authored with SAI Global with over 50 peer reviewers from across our value chain, subject matter experts and NGOs



Our work will be underpinned by better information, insights and data to make more informed decisions



What next?



Globalisation Effects on Farming Systems Around the World

Beth Hart
Sainsbury's Head of Agriculture & Sourcing

