

# Grain Farming in Western Canada

Hannah Konschuh

Owner/Operator,  
Sage Bluff Farms Ltd.



 **@HJKizz #IFMA21**

**Stewards of the land**

**Getting succession right**

**Continuing legacy**

# The Management Team

**Profitable and successful business**

**Visionary & Innovative**



 @HJKizz #IFMA21

## The Canadian Prairies are a cash crop force



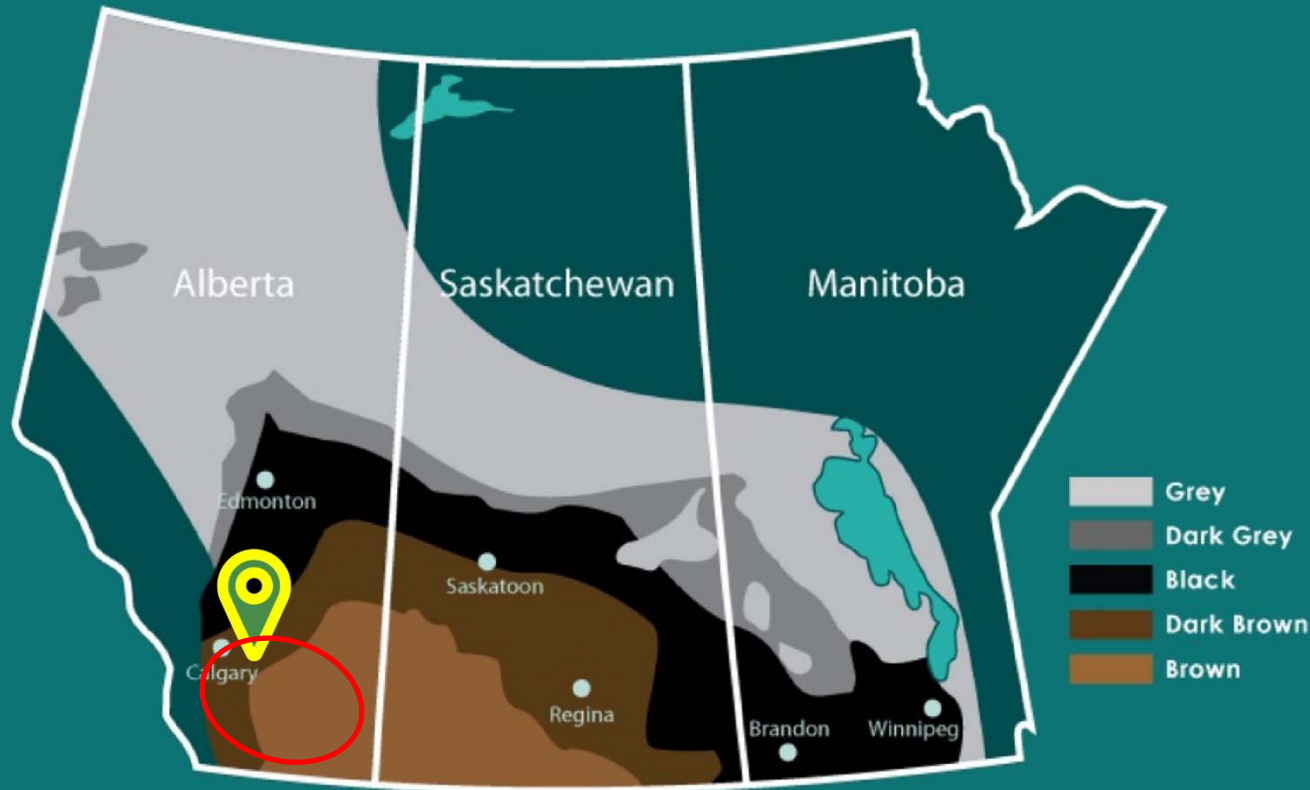
83% of Canada's cropland is found in Alberta, Saskatchewan, & Manitoba: 77.5 million acres | 31.4 million hectares

Average farm size in the Prairie Provinces is 1404 acres | 568 hectares

Canada is the largest exporter of canola, wheat & lentils, and was the 5<sup>th</sup> largest ag-exporter globally (5.7% of global exports)

1 in 8 Canadians are employed in agri-food - 2.3 million jobs!

## SOIL ZONES IN WESTERN CANADA



map via growwinterwheat.ca

**Dark Brown Chernozems**  
**3-4 % Organic Matter**

**Semi-arid**, warm summers  
and *cold winters*

Ideal seeding and harvesting:  
Mid April – Mid August

**“Chinook zone”**

**121 frost free days**

**300 – 390** mm annual  
precipitation

 @HJKizz #IFMA21



**Average yield: 35 bu/ac**  
**Bumper yield: 40-50 bu/ac**

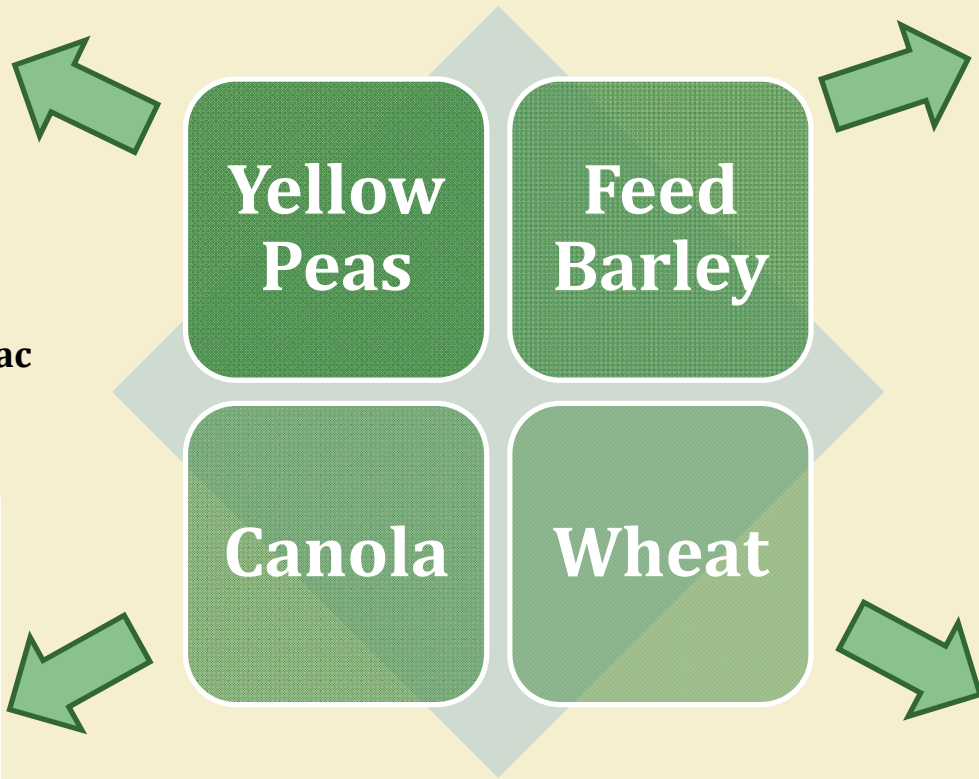


Photo credit: Alberta Barley

**Average yield: 50 - 60 bu/ac**  
**Bumper yield: 80- 100+ bu/ac**



Photo credit: Canola Council of Canada

**Average yield: 30-40 bu/ac**  
**Bumper yield: 50-60 bu/ac**



Photo credit: Alberta Wheat Commission

**Average yield: 45-60 bu/ac**  
**Bumper yield: 60-80 bu/ac**

# High Tech Agriculture





COMMODITIES | Economics

Canada, U.S., Mexico agriculture chiefs meet on NAFTA renegotiation

For every \$1 in income... \$0.79 in operating exp...

Farmers can grow the Canadian economy — if they're not shackled

Removing a tool that allows grain farmers to even out their income would hamper their ability to invest in and expand their operations

Jun... saw 015

Farmers fear big price hit from carbon tax

The focus has been on the price of fuel, but the effect of a carbon tax on the price of fertilizer, chemicals, and machinery could be much greater



# Looking to the future

**Build capacity**

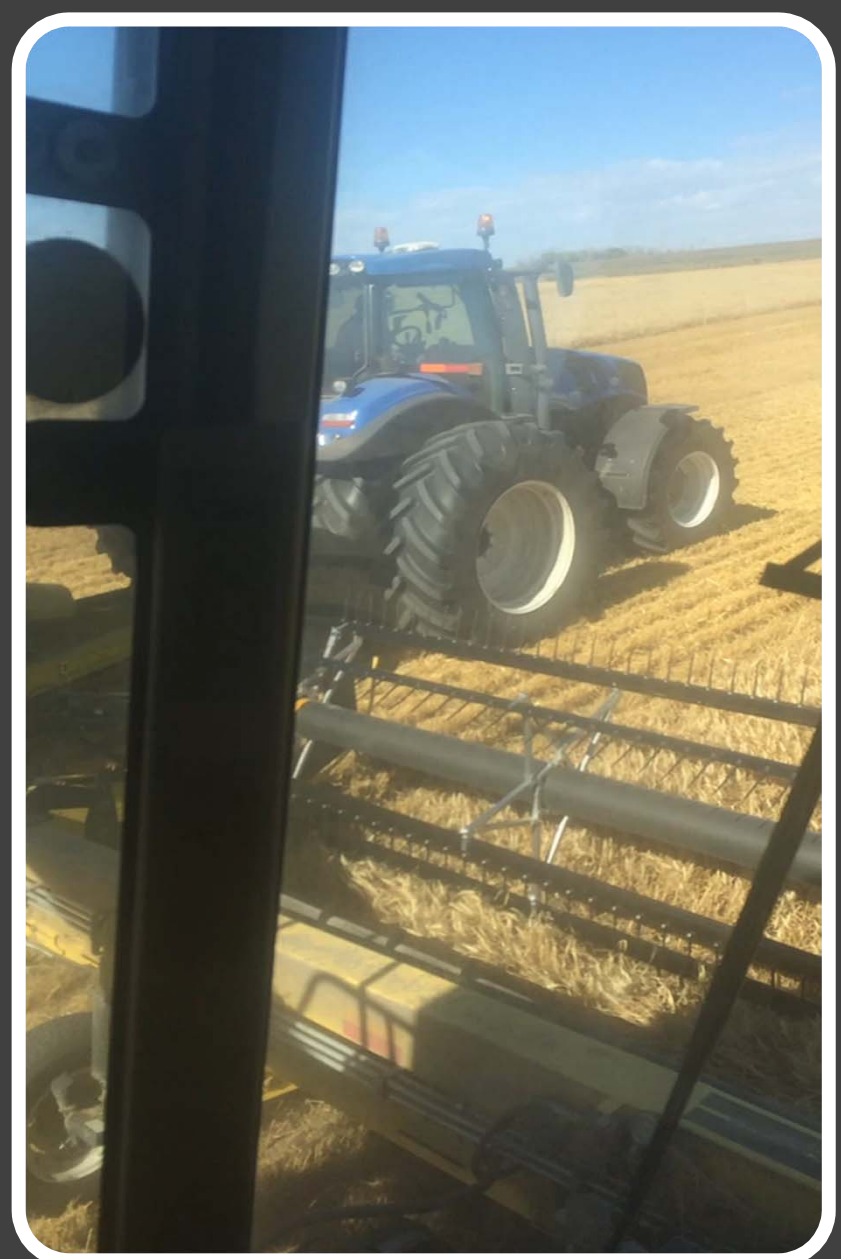
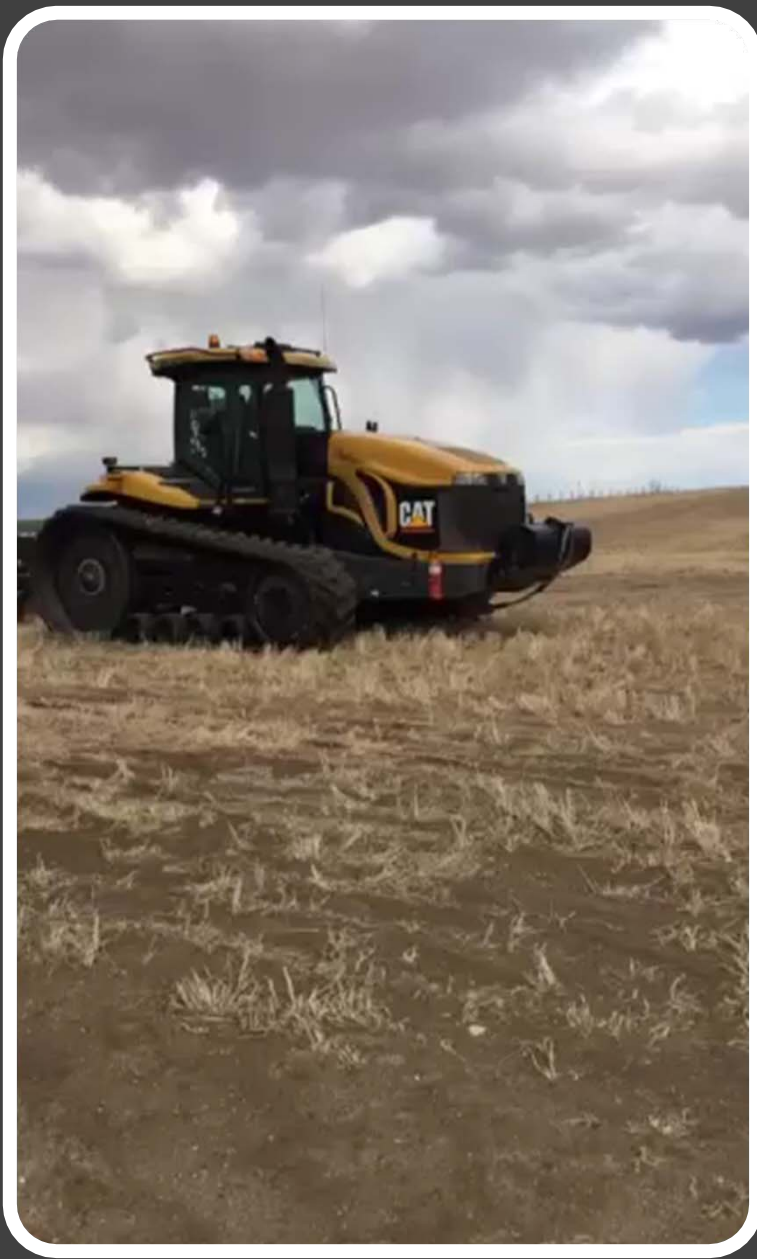
*Seize opportunities*

**Calculated *risks***

**Sustained growth**

**Minimize external threats**





# Thank you!



FARM MANAGEMENT CANADA  
GESTION AGRICOLE DU CANADA



Resources:

- (1) 2016 Ag Census: [www.statcan.gc.ca](http://www.statcan.gc.ca)
- (2) Unleashing the growth potential of key sectors: [www.budget.gc.ca/aceg-cce/pdf/key-sectors-secteurs-cles-eng.pdf](http://www.budget.gc.ca/aceg-cce/pdf/key-sectors-secteurs-cles-eng.pdf)

